



# MATT CRANE

MIAMI REAL ESTATE



## FAENA HOUSE

RESIDENCES BY FOSTER + PARTNERS

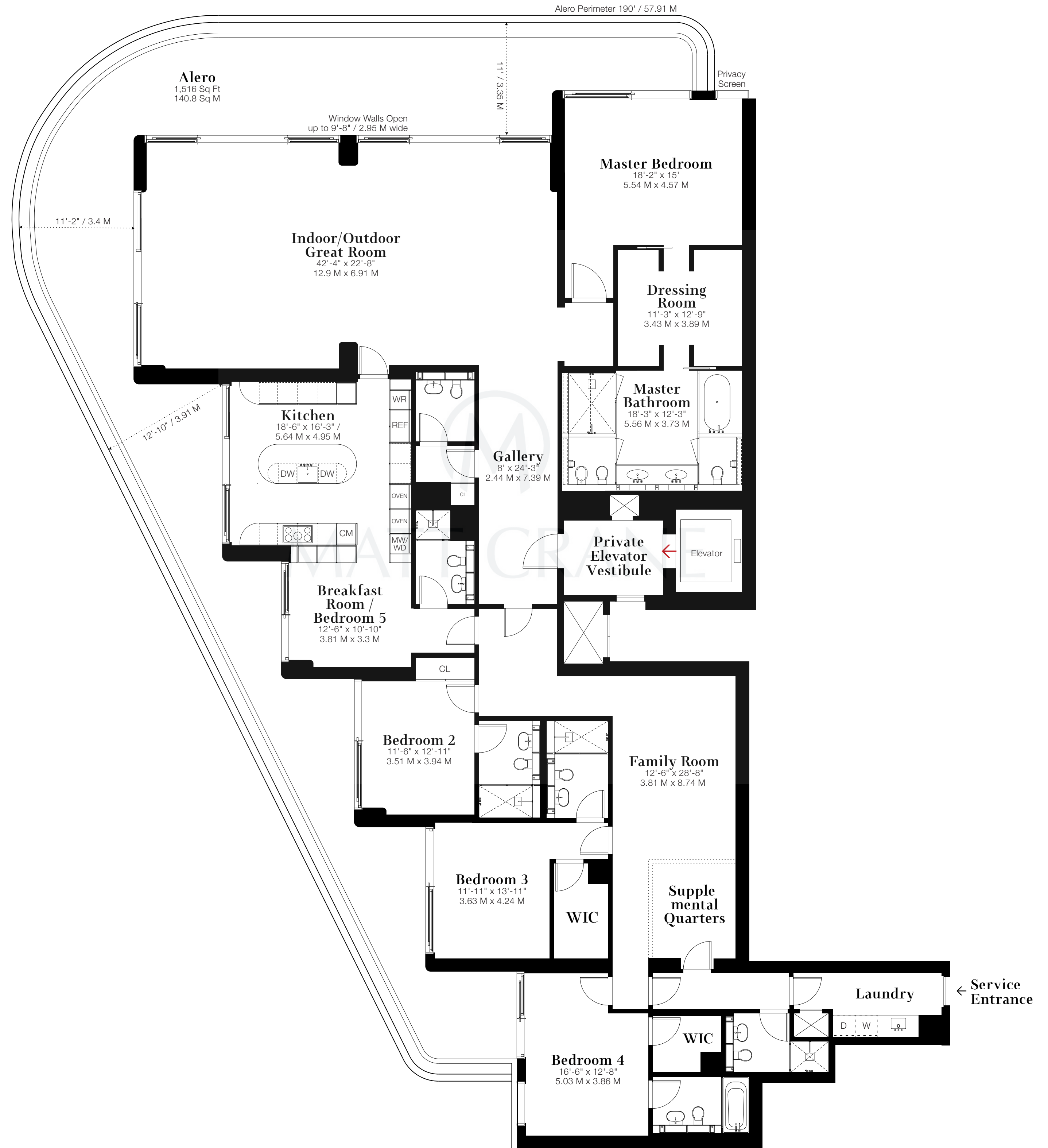
## RESIDENCE A

4+ BEDROOMS / 6 BATHROOMS / 1 POWDER ROOM

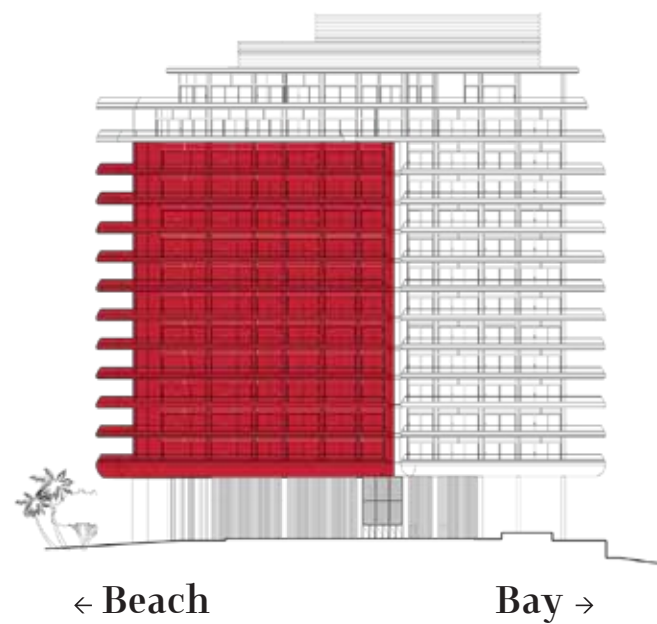
Total Living: 6,246 Sq Ft / 580.2 Sq M

Indoor: 4,730 Sq Ft / 439.4 Sq M

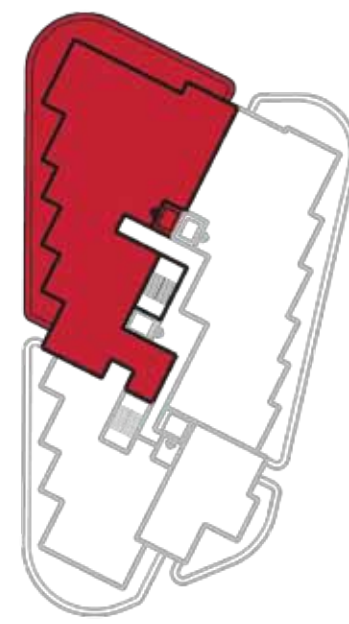
Alero: 1,516 Sq Ft / 140.8 Sq M



NORTH FACADE



↑ Beach



↓ Bay



This is not an offer to sell, or solicitation of offers to buy, the condominium units in states where such offer or solicitation cannot be made. This offering is made only by the offering documents for the condominium and no statement should be relied upon if not made in the offering documents. Stated dimensions are measured to the exterior boundaries of the exterior walls and the centerline of interior demising walls and in fact vary from the dimensions that would be determined by using the description and definition of the "Unit" set forth in the Declaration (which generally only includes the interior airspace between the perimeter walls and excludes interior structural components). For your reference, the area of the Unit, determined in accordance with those defined unit boundaries, is 4,275 sq ft. Note that measurements of rooms set forth on this floor plan are generally taken at the greatest points of each given room (as if the room were a perfect rectangle), without regard for any cutouts. Accordingly, the area of the actual room will typically be smaller than the product obtained by multiplying the stated length times width. All dimensions are approximate and may vary with actual construction, and all floor plans and development plans are subject to change.